

NSW WATER POLICE
SYDNEY TO HOBART
YACHT RACE
START



OPERATIONAL ORDERS

SATURDAY
26 DECEMBER 1998

Version update 22 December, 1998
Prepared by Senior Constable David Upston
NSW Water Police, Sydney
Ph: 02 9692 5411 Fax: 02 9692 5427

1. SITUATION

1.1 GENERAL INFORMATION

On Boxing Day, Tuesday 26th December 1998, the annual Sydney to Hobart Yacht Race will be conducted on Sydney Harbour commencing at **1300 (eastern summer time)** from the indicated starting line near Shark Island. An exclusive use area will be established in support of the race between 1130 and 1400 (eastern summer time). This area will be marked by about 149 *numbered* Waterways buoys. During this period entry to the area will be prohibited to all non-participating vessels.

Spectator craft should keep clear of the racing fleet at all times, including the period before the start of the race, and as the competitors make their way to the heads and the open sea.

*VIP
Vessels*
These vessels will remain in these positions until the start of the race at 1300 when they will proceed as close as possible along the inside perimeter of the course 250 metres ahead of the competing yachts.

1.2 POLICE COMMITMENT (see annexure 2)

The NSW Water Police Section, Sydney assisted by Sans Souci Water Police and Broken Bay Water Police will provide the following launches to provide adequate Policing capabilities.

NEMESIS; ABBOTT; SEA HAWK; INTREPID; FEARLESS; FARM COVE; SHELL COVE; ST. GEORGE; WISEMANS FERRY; BALLINA & 2 MRU RUNABOUTS.

CREW – 28 PERSONEL

1.3 WATERWAYS AUTHORITY CONTROL BANNERS

All vessels acting in an official capacity i.e. Royal Volunteer Coastal Patrol and the Australian Volunteer Coast Guard will display the Black and orange banners issued by the Waterways Authority.

1.4 TIMETABLE OF EVENTS

1000-1500	PORT CLOSED TO MAJOR COMMERCIAL SHIPPING
1030	VIP VESSELS - OLYMPIC SPIRIT, AUSSIE ONE AND AUSSIE MAGIC DEPART DARLING HARBOUR.
1030- 1230	CONTROLLED ACCESS TO RUSHCUTTERS BAY, WATERWAYS PATROL VESSELS & RIBs ATTEND
1100	ALL POLICE VESSELS IN POSITION. - AUSSIE ONE AND OLYMPIC SPIRIT IN POSITION FOR PARADE.
1100	FIRST YACHTS CLEAR CYCA MARINA FOR PARADE OF SAIL.
1145	RADIO CHECK WITH CONTROL VESSELS. CALL SIGN 'WATERWAYS CONTROL' EAST FLANK CONTROL BY RVCP AND WEST FLANK CONTROL BY AVCG.
1200	EXCLUSION ZONES ACTIVATED. - YACHT MANOEUVRING AND RACE AREAS CLEARED OF ALL SPECTATOR CRAFT.
1200	ALL VIP VESSELS MOVE TO THEIR POSITIONS ON STARTING LINE.
1215	MARKER VESSELS ON STATION
1250	TEN MINUTE GUN FOR MAIN FLEET FIRED FROM AUSSIE ONE NEAR SHARK ISLAND.

- 1255 FIVE MINUTE GUN FIRED FORM AUSSIE ONE NEAR SHARK ISLAND.
- 1300 RACE START - START LINE BETWEEN NIELSON PARK AND BRADLEYS HEAD. VIP FLEET REMAIN OF RACE FLEET AND ESCORT TO THE HEADS.

2. MISSION

TO PROVIDE EFFECTIVE POLICING AND CROWD CONTROL FOR THE START OF THE SYDNEY TO HOBART YACHT RACE 1998.

3. EXECUTION

3.1 WATER POLICE COMMANDER - Senior Sergeant WELSH

WATER POLICE FORWARD COMMANDER - Senior Constable UPSTON on Waterways Command Vessel - WA000

3.2 WATERWAYS CONTROL - Mr. KEITH CALDWELL on Waterways Command Vessel - WA000

3.3 POLICE RESPONSIBILITY AND CREW DUTY

All police vessels are to be on station at 11:00. Water Police crew's responsibility will be support Waterways and Volunteers in crowd management. You will patrol your allotted sector until the 13:00 (start gun) fires then move off in the direction of the fleet maintaining clear a passage for the competing yachts. After all competing yachts have cleared Sydney Heads each crew will be dismissed and return to your respective base.

3.4 SPECTATOR CRAFT & COMMERCIAL VESSEL MOVEMENT

Charter vessels that cannot go outside sheltered waters and other vessels that are not going further than The Heads are not to block the channel at south Head. These vessels should be instructed prior to commencement of the race keep to the Western side of the course where there is more room.

Spectator craft are not to anchor within 100m of the exclusion zone boundaries in the area between the limits of the course, Green Point to Hornby Light and Cannae Point to Outer North Head. (SEE GWC. 4)

NOTE: NO WASH & TEN (10) KNOT MAXIMUM SPEED LIMIT APPLIES IN THE AREA EAST OF BRADLEYS HEAD AND GROTTO POINT.

Prior to the start, charter vessels and ferries may station themselves up to the spectator line in the special commercial area Chowder Bay which will be marked by special Waterways orange marker bouys.

No charter vessel or ferry over 20m in length is to be within 20m of the spectator line in other parts of the course.

NO VESSELS ARE PERMITTED TO ATTACH LINES TO MARKER BOUYS AND NAVIGATION MARKS

3.4 EMERGENCY AND MEDIVAC - PROCEDURE

Primary drop off points for persons requiring ambulance conveyance to hospital as follows:

- HMAS PENGUIN - UBD REF MAP 58D8
- GARDEN ISLAND - UBD REF MAP 2D5
- (SECONDARY) (**SEE ANNEXURE 1**)

3.5 EMERGENCY - CO-ORDINATION

In the event of an emergency, the vessels identifying the problem is to transmit the emergency procedure as laid down in the Radio Operators Handbook issued by Australian Communications Authority. Should it be deemed necessary by the Commander NSW Water Police, Sydney, The Marine Disaster Plan (MARDAP) would be activated.

3.6 RESPONSIBILITY-COMPETING YACHTS

Competing yachts will race under AYF rules and regulations. Any vessel not participating in the race will be subject to the NSW Collision Regulations.

3.7 MEDIA VESSELS

There will be 7 media vessels. Media and race official vessels will fly prominently, a red flag with black logo with the letter 'O' in black in one corner. Flag size 4'x 2'. Sponsors flags will be flown separately. Each vessel will carry a suitably qualified AYF person as a competent observer.

Each vessel is to remain at least 60m clear of any contestant and the vessels AUSSIE ONE, AUSSIE MAGIC, OLYMPIC SPIRIT and CITY OF SYDNEY whilst in the exclusion zone. These vessels will remain in position until the start at 1300 when they will proceed as close as possible along the inside perimeter of the course 250 metres ahead of the competing yachts.

Only vessels flying the official media flag and in possession of official permission from the Waterways Controller are to be allowed on the course proper. The Media Liaison Officer will be onboard the vessel 'OMEGA'.

To date the following vessels are registered as 'MEDIA VESSELS':

VESSEL	PERMIT No.	TYPE	SKIPPER	PERSONS
PHOENIX	16623	14m 1C	R. WARD	11 PAX
POLARIS	16255	13.2m 2C	D. POWER	7 PAX
SHORE PATROL	17704	13.5m 1C	J. SHAW	12 PAX
OMEGA	18039	14.8m 2C	(FLAGSHIP CHARTERS)	5 PAX
SEA EAGLE	18915	13.1m 1C	J. SCARPIAS	12 PAX
FISH FINDER	11723	13m 2C	T. DAVIS	12 PAX
SHIMANO EXPRESS	21329	10.4m 2C	S. INSLEY	8 PAX

3.8 RACE COMPETITORS IDENTIFICATION

Competing yachts can be identified by and will exhibit a sponsor's decal on each side of their bow and from the backstay port/starboard mizzen, race identification flags measuring approximately 900mm x 600mm as follows:

- *Bright Blue* with "Telstra" logo.

No other flags will be flown from the same stay whilst the race flag is displayed, with exception of code flags Bravo (protest) or India (acknowledging infringement.)

3.9 MANLY FERRY/JETCAT TIMETABLE

FERRY SERVICE		
Last departure Sydney	1130	Resume Sydney 1330
Last departure Manly	1145	resume Manly 1345

JETCAT SERVICE		
Last departure Sydney	1120	Resume Sydney 1350
Last departure Manly	1120	Resume Manly 1420

3.10 TIDE DETAILS

HIGH	0231 hrs	1.2m
LOW	0814 hrs	0.50m
HIGH	1427 hrs	1.40m

4. ADMINISTRATION AND LOGISTICS

4.1 UNIFORM

Full summer uniform will be worn for this Operation; appointments will be carried in the usual manner. MRU crew will wear operational dress overalls and foot ware.

4.2 WELFARE

- Crew in open runabouts will wear suitable headdress and protect uncovered skin with sun block. Comfort breaks can be arranged without notice with the nearest launch.
- Masters to ensure all crew has adequate drinking sustenance.
- Any injury to crew will to be reported to the duty shift supervisor and treated accordingly.
- Meal breaks will be provided at the conclusion of the event.

4.3 BRIEFING

A full briefing will be scheduled for 0900 for all Water Police personnel and will be conducted at the Water Police premises in Pymont.

4.4 DEBRIEFING

A debriefing will be conducted immediately after the completion of the event.

Crews from Botany Bay and Broken Bay will not be required to attend debrief. Any information can be relayed in point form to Senior Constable Upston via Sydney Water Police Station.

5. COMMAND/COMMUNICATIONS

- 5.1** The Police Commander for this Operation will be Senior Sergeant WELSH - NSW Water Police Branch
- 5.2** The Forward Commander will be Senior Constable UPSTON - NSW Water Police Branch.

5.3 Crewing of police vessels will be as indicated in annexure 2 attached.

5.4 Communications between Police Vessels will be via channel ~~38~~³² UHF Police Radio, Channel 17 (75) VHF, 27.880 and channel 2524 if necessary.

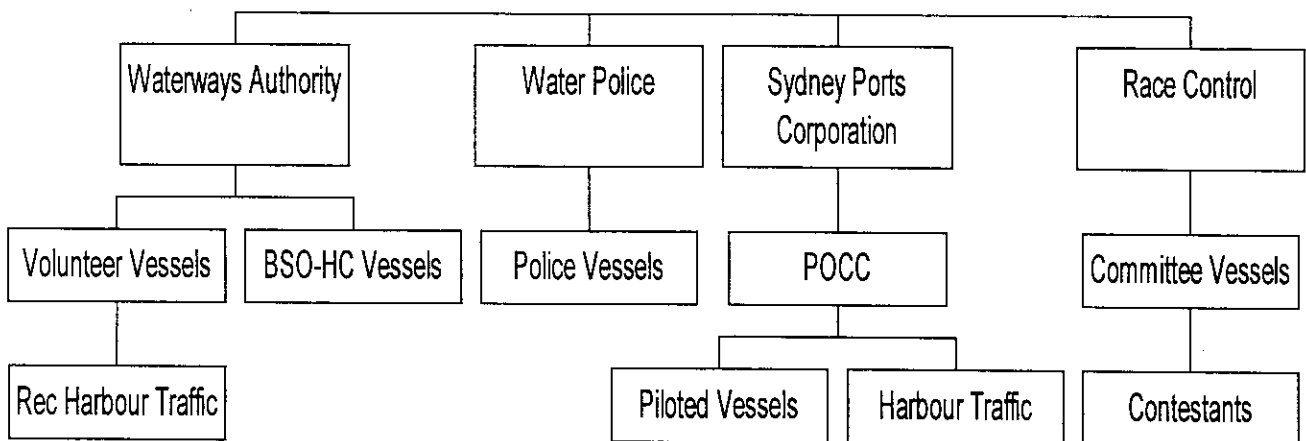
The RVCP will utilise 27.98 MHz and VHF 17 (75)

The AVCG will utilise 27.96 MHz and VHF 17 (75) UHF (18)

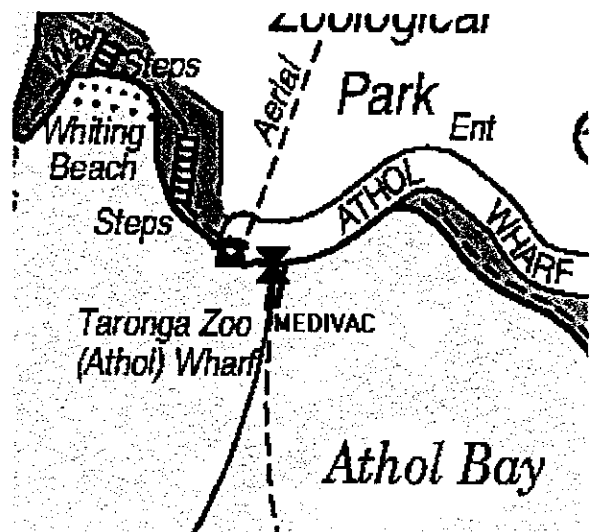
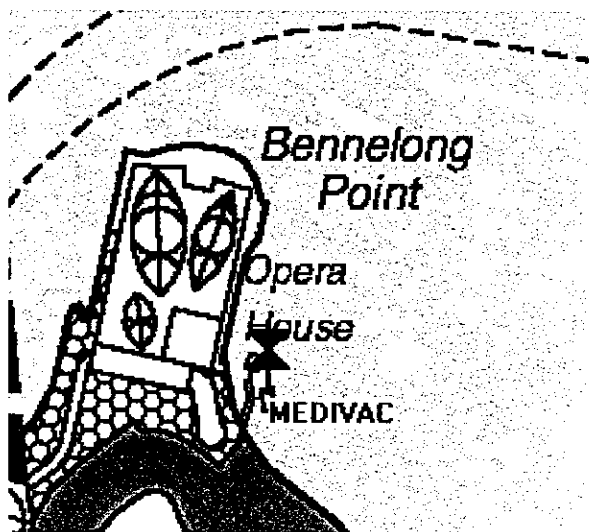
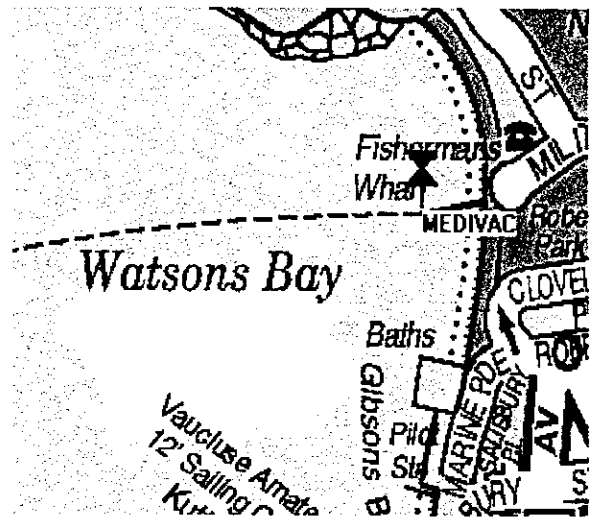
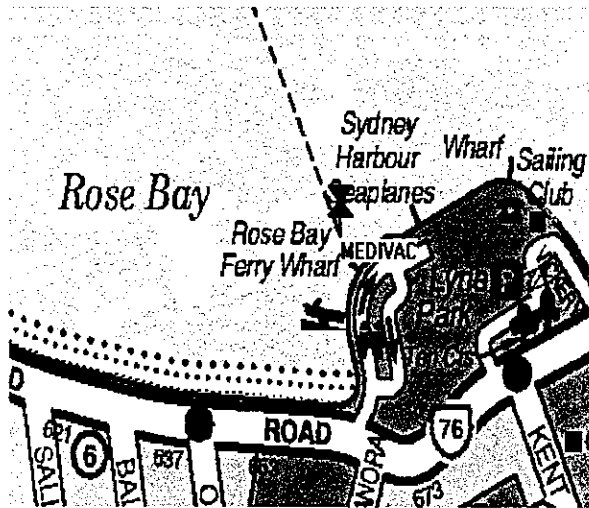
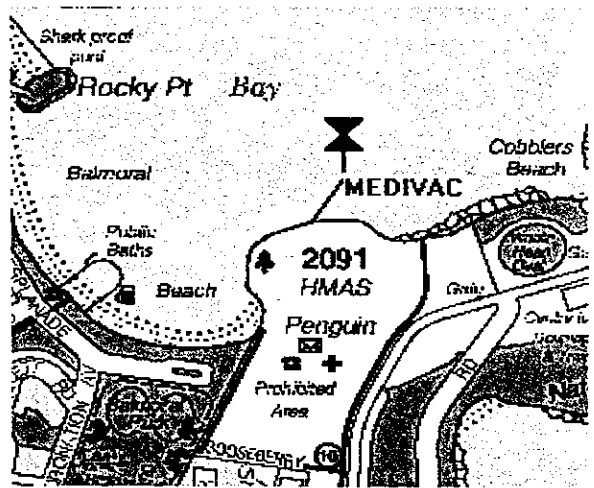
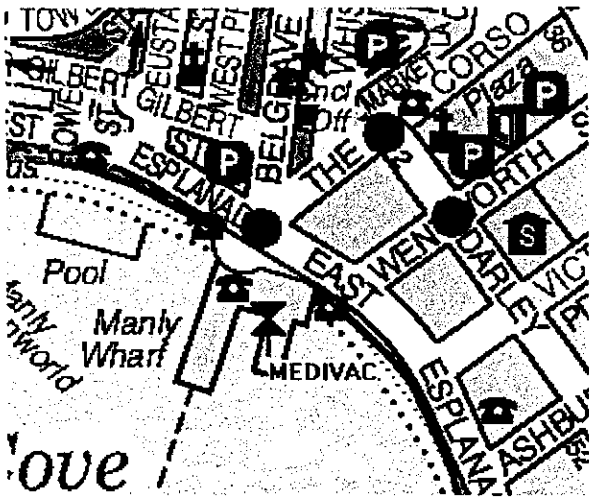
CYCA VHF 81 and 73 call sign 'Aussie Magic'

SYDNEY FERRIES VHF channel 17 and alternate 13

COMMAND, CONTROL & COORDINATION



ANNEXURE 1.



ANNEXURE 2.

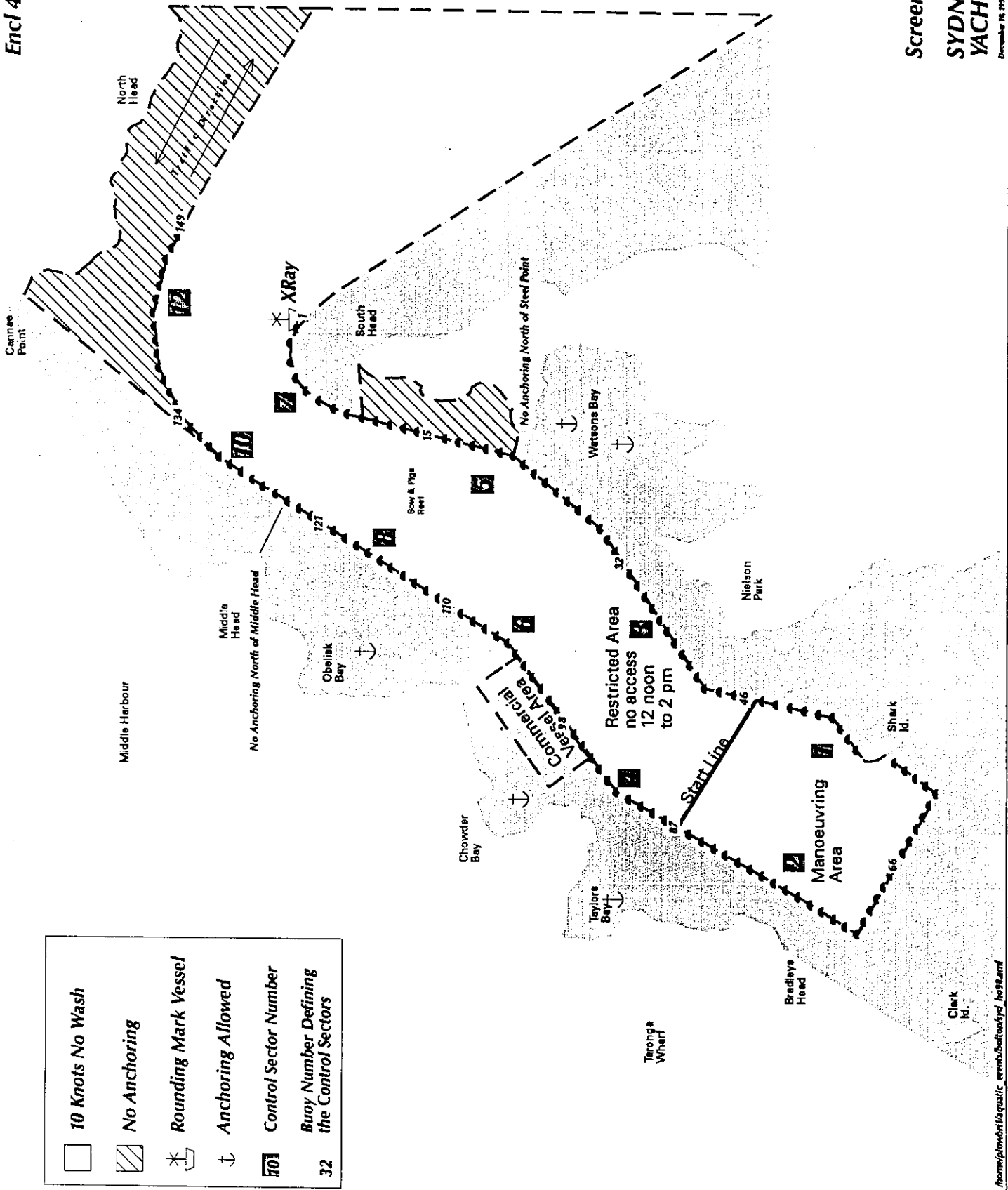
LAUNCH	CREW	SHIFT	ASSIGNED SECTOR	SPECIAL NOTE
NEMESIS	VICKERS MAGUIRE DAVIDSON	07:00 19:00	6 (98-110) CHOWDER BAY	RETURN ASAP AFTER THE MAJORITY OF FLEET HAS CLEARED THE HEADS
INTREPID	WORTHINGTON WATSON	07:00 19:00	3 (32-46) NEILSON PARK	2 X NSW AMBULANCE PARAMEDICS
SEA HAWK	BINGHAM COMBER	07:00 19:00	8 (110-121) OBELISK BAY	DUTY LAUNCH 2 X R.V.C.P. MEDICOS
FARM COVE	LUC BROWN	07:00 19:00	5 (15-32) WATSONS BAY	DUTY RUNABOUT
SHELL COVE	BIRKS GANNON	07:00 19:00	10 (121-134) MIDDLE HEAD	
ST. GEORGE	COOPER BIZARO CARLIN	10:00 19:00	ROVING	VESSEL MUST REMAIN IN CLOSE PROXIMITY OF CONTROLLED AREA
WISEMANS FERRY	PORTER	10:00 18:30	4 (87-98) BRADLEYS HD.	VESSEL NOT TO EXCEED SECTOR 12
BALLINA	PORTER	10:00 18:30	2 (66-87) CLARK ISLAND	VESSEL NOT TO EXCEED SECTOR 12
MRU	JENNINGS CREW X 3 (2 VESSELS)	10:00 18:30	1 (46-72) SHARK ISLAND	VESSELS NOT TO EXCEED SECTOR 7
FEARLESS LCS	BOTANY BAY WATER POL.	07:00 16:00	7 (1-15) SOUTH HEAD	
ABBOTT	BROKEN BAY WATER POL.	07:00 19:00	12 (134-149) NORTH HEAD	

ORDERS





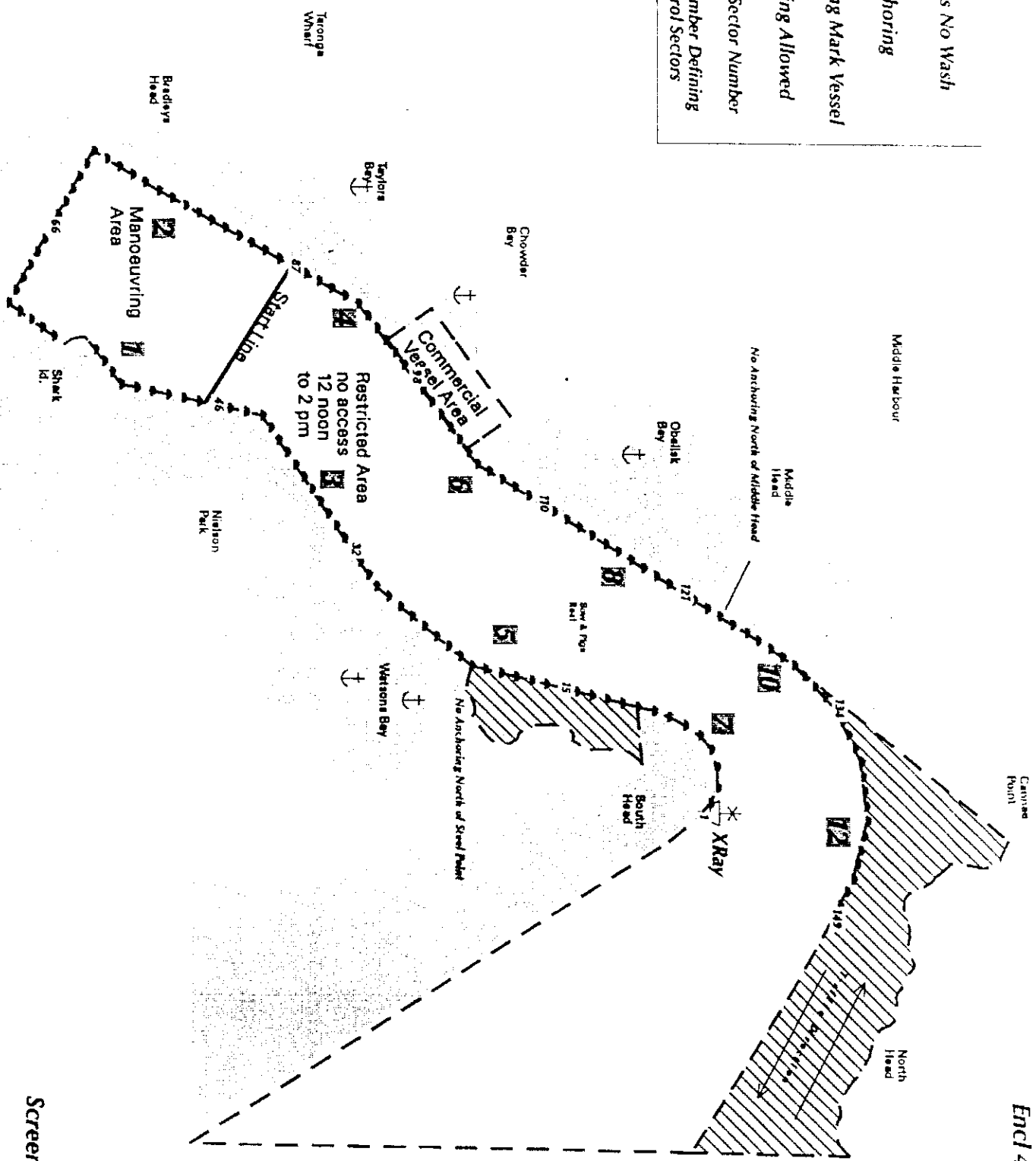
NOT TO BE USED FOR NAVIGATION PURPOSES



Screen Sectors
**SYDNEY TO HOBART
 YACHT RACE 1998**
 December 14, 1998



- 10 Knots No Wash
- No Anchoring
- Rounding Mark Vessel
- Anchoring Allowed
- 30 Control Sector Number
- 32 Buoy Number Defining the Control Sectors



Screen Sectors

SYDNEY TO HOBART
YACHT RACE 1998